

# **IF NOT NOW, WHEN?**

**Action for our children's future**

## **KEYNOTE: PUBLIC SECTOR CHALLENGES**

Mo Baines  
Chief Executive  
APSE



**Association for Public Service Excellence**

**Be part of the conversation!  
Follow APSE on Twitter and LinkedIn**



**@apseevents  
@apsenews**



**@APSE - Association  
for Public Service  
Excellence**

[www.apse.org.uk](http://www.apse.org.uk)



**Association for Public Service Excellence**

# The Future of Local Government Frontline Services

**Mo Baines, Chief Executive**

**APSE**

# The state of local government finance

- 2023-2024 - 9.2 per cent increase in local government core spending power
- Assumes maximum council tax increases
- During the financial year inflation higher throughout
- Workforce pay – the right thing but unaccounted for
- Does not address the fiscal drag of austerity with historic underfunding

# Adult Social care funding

- A call for a £13 billion injection
- £6 billion to tackle current pressures / immediate and short-term impact
- £7 billion to enable adult social care to deliver its statutory duties – including prevention and escalation of need.

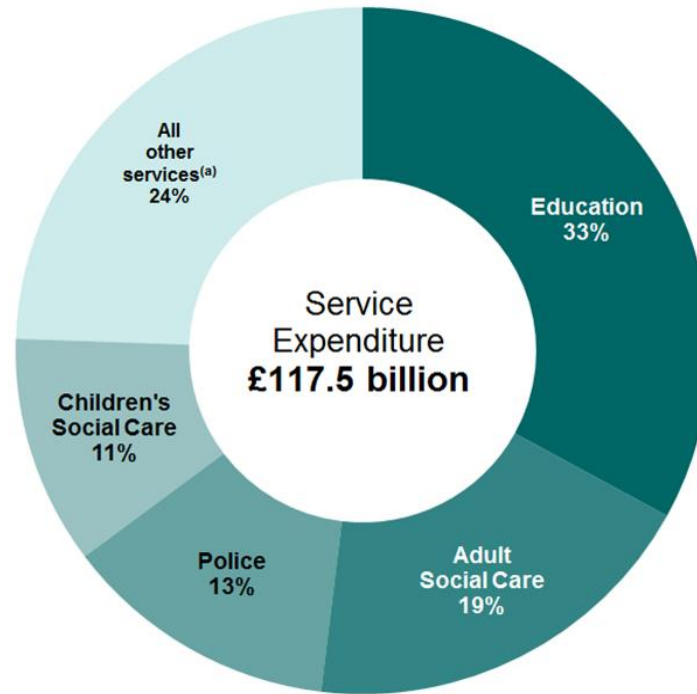
# Childrens services

- The number of looked-after children rose 24% in the decade to 2020-21
- By 2020-21 early intervention spends ( e.g. sure start ) down to 18.5% of spend but in 2010-11 it was 42% of spend
- £1.6bn shortfall – to stand still – not improve children's services .

# Unequal misery

- 'Decentralisation' reduction in Revenue Support Grant  
– poorest areas the most reduced
- Less capable of raising council tax
- Less capable of growth in business rates and council tax  
but increased demand for adult and Childrens' services

# Expenditure by service 2023





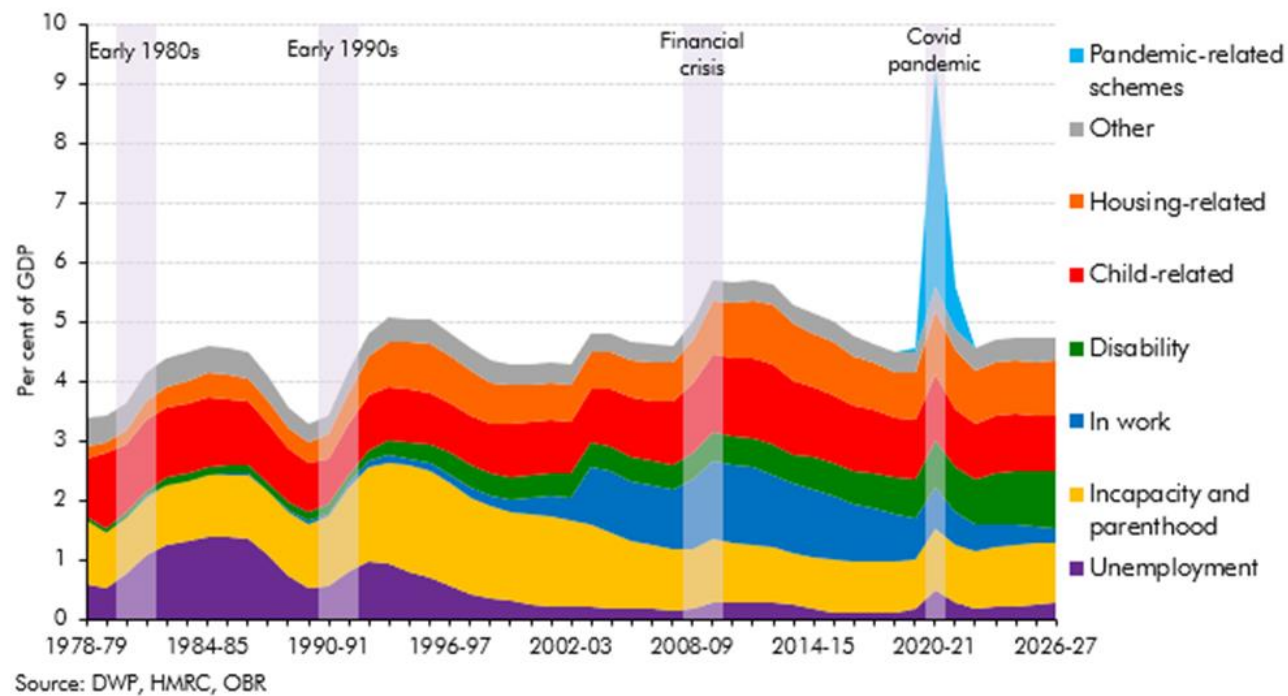
## ‘Other services’

- Broad neighbourhood services dependent on much reduced overall budgets
- ‘Subsidy’ replaced by trading accounts or surplus positions
- DFE swallows up increases – not passported through DLUHC

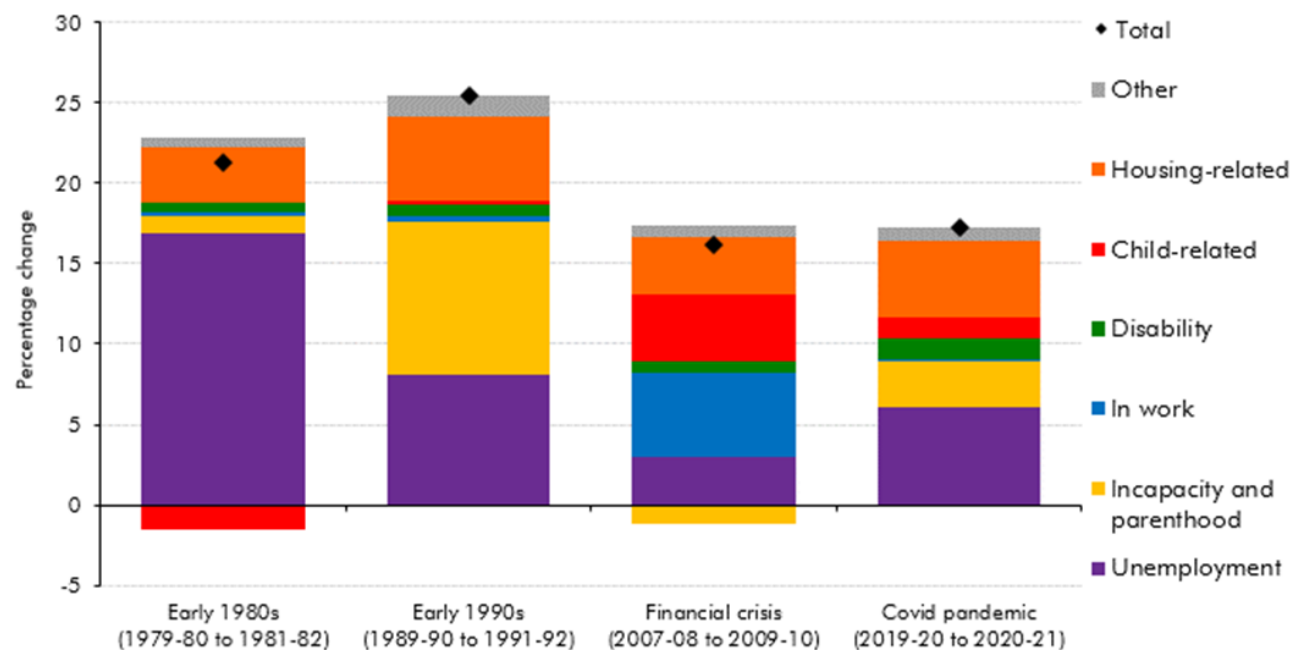
# Outcomes

- Areas most in need receive the least
- Prevention is missed
- Demand increases
- Welfare nets are frayed and failing

# Welfare spend by category



# Welfare spend by 'recessions'



# Child poverty

- 4.2 Million children living in poverty
- 48% of children living in poverty are from BAME families
- 71% are from working families
- 450,000 could be lifted out of poverty if child benefit went up by £10.00 a week

\* *Source Child Poverty Action Campaign*

# The tipping points...

- Housing need
- Climate change and ecological emergency
- Obesity and ill-health prevention / inactivity
- Waste and resources
- Social care
- Childrens' care
- Cost of living crisis

# Levelling up



Levelling up .....





# Investing in children

- Lifting children out of poverty – to be achieved by a holistic approach to welfare and work
- Value of nutrition and enough food should not be understated
- Value of universal school food provision
- Are major political parties are dodging the issues?



**Association for Public Service Excellence**

**YES!**

# **NEW MUNICIPALISM**

Delivering for local people and local economies



**Association for Public Service Excellence**

# Contact details

**Mo Baines, Chief Executive, APSE**

**Email: [mbaines@apse.org.uk](mailto:mbaines@apse.org.uk)**



**GB 11409**



**GB 11132**



**GB 14074**

**Association for Public Service Excellence**

3rd floor, Trafford House, Chester Road,  
Old Trafford, Manchester M32 0RS.

**telephone: 0161 772 1810**

**web: [www.apse.org.uk](http://www.apse.org.uk)**

**IF NOT NOW,  
WHEN?**

**Action for our children's future**